



Pulegge dentate HTD® per bussola conica POGGILOCK®

HTD® timing belt pulleys for taper bush **POGGILOCK®**

HTD® Zahnriemenscheiben für Spannbuchse **POGGILOCK®**

Poulies dentées HTD® pour moyeu amovible **POGGILOCK®**

Poleas dentadas HTD® para casquillo cónico **POGGILOCK®**





Pulegge dentate HTD® per bussola conica **POGGILOCK**®

HTD® timing belt pulleys for taper bush **POGGILOCK**®

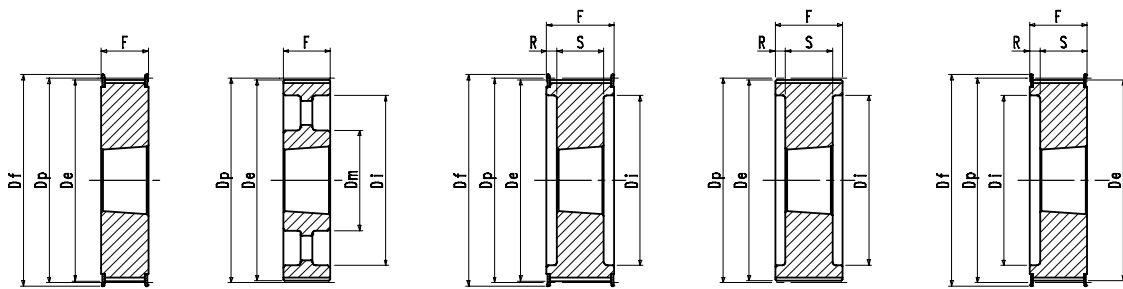
HTD® Zahnriemenscheiben für Spannbuchse **POGGILOCK**®

Poulies dentées HTD® pour moyeu amovible **POGGILOCK**®

Poleas dentadas HTD® para casquillo cónico **POGGILOCK**®

Forme costruttive

Design features - Konstruktionsmerkmale - Caractéristiques - Características



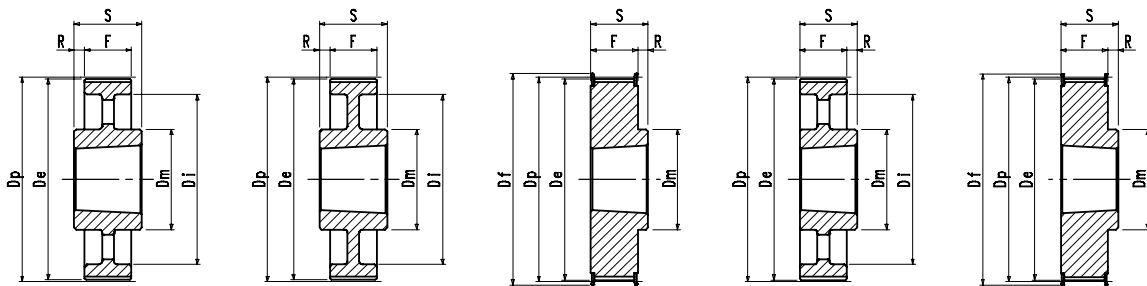
3F

3A

4F

4

5F



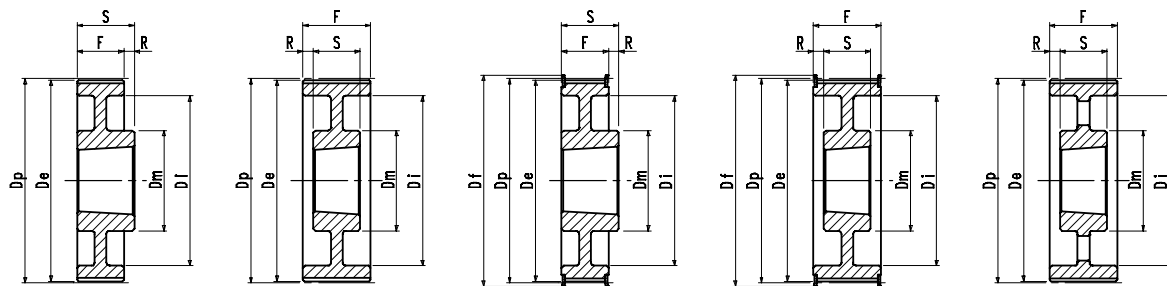
7A

7W

8F

8A

8RF



8W

9W

8WF

9WF

9A



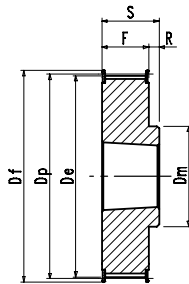
Pulegge dentate HTD® per bussola conica **POGGILOCK**®

HTD® timing belt pulleys for taper bush **POGGILOCK**®

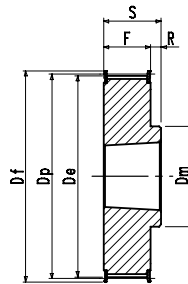
HTD® Zahnriemenscheiben für Spannbuchse **POGGILOCK**®

Poulies dentées HTD® pour moyeu amovible **POGGILOCK**®

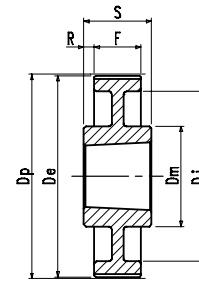
Poleas dentadas HTD® para casquillo cónico **POGGILOCK**®



8RF



8F



7W

HTD® 5M 15 Passo - Pitch - Teilung - Pas - Paso 5 mm

Materiale Material Werkstoff Matériel Material	Codice Item number Codierung Code Código	Descrizione Designation Bezeichnung Désignation Referencia	Bussola Bush Buchse Moyeu Casquillo	Foro	Dp	De	Df	Dm	Di	F	S	R	Peso
				Bore Bohrung Alésage Agujero									Weight Gewicht Poids Peso
				max mm	mm	mm	mm	mm	mm	mm	mm	mm	kg
Acciaio Steel Stahl Acier Acero	33F034015P	PL 34 5M 15 - 8RF	1008	25	54,11	52,97	57,0	43,0	-	20,5	22,0	1,50	0,19
	33F036015P	PL 36 5M 15 - 8RF	1108	28	57,30	56,16	60,0	44,0	-	20,5	22,0	1,50	0,20
	33F038015P	PL 38 5M 15 - 8RF	1108	28	60,48	59,34	66,0	48,0	-	20,5	22,0	1,50	0,25
	33F040015P	PL 40 5M 15 - 8F	1108	28	63,66	62,52	71,0	52,0	-	20,5	22,0	1,50	0,31
	33F044015P	PL 44 5M 15 - 8F	1108	28	70,03	68,89	75,0	54,0	-	20,5	22,0	1,50	0,40
	33F048015P	PL 48 5M 15 - 8F	1210	32	76,39	75,25	83,0	64,0	-	20,5	25,0	4,50	0,46
Ghisa Cast iron Grauguss Fonte Fundición	33F056015P	PL 56 5M 15 - 8F	1210	32	89,13	87,99	93,0	70,0	-	20,5	25,0	4,50	0,67
	33F064015P	PL 64 5M 15 - 8F	1210	32	101,86	100,72	106,0	78,0	-	20,5	25,0	4,50	0,96
	33F072015P	PL 72 5M 15 - 8F	1610	42	114,59	113,45	119,0	90,0	-	20,5	25,0	4,50	1,19
	33F080015P	PL 80 5M 15 - 8F	1610	42	127,32	126,18	135,0	92,0	-	20,5	25,0	4,50	1,57
	33F090015P	PL 90 5M 15 - 7W	1610	42	143,24	142,10	-	92,0	126,0	20,5	25,0	2,25	1,47
	33F112015P	PL 112 5M 15 - 7W	1610	42	178,25	177,11	-	92,0	162,0	20,5	25,0	2,25	1,94
	33F136015P	PL 136 5M 15 - 7W	2012	50	216,45	215,31	-	106,0	199,0	20,5	32,0	5,75	3,06
	33F150015P	PL 150 5M 15 - 7W	2012	50	238,73	237,59	-	106,0	222,0	20,5	32,0	5,75	3,90



Pulegge dentate HTD® per bussola conica POGGILOCK®

HTD® timing belt pulleys for taper bush POGGILOCK®

HTD® Zahnriemenscheiben für Spannbuchse POGGILOCK®

Poulies dentées HTD® pour moyeu amovible POGGILOCK®

Poleas dentadas HTD® para casquillo cónico POGGILOCK®

HTD® 8M 20 Passo - Pitch - Teilung - Pas - Paso 8 mm

Materiale Material Werkstoff Matériel Material	Codice Item number Codierung Code Código	Descrizione Designation Bezeichnung Désignation Referencia	Bussola Bush Buchse Moyeu Casquillo	Foro	Dp	De	Df	Dm	Di	F	S	R	Peso Weight Gewicht Poids Peso
				Bore Bohrung Alésage Agujero									
				max mm	mm	mm	mm	mm	mm	mm	mm	mm	kg
Acciaio Steel Stahl Acier Acero	33G022020P	PL 22 8M 20 - 5F	1008	25	56,02	54,65	60,0	-	41,0	28,0	22,0	6,00	0,24
	33G024020P	PL 24 8M 20 - 5F	1108	28	61,12	59,75	66,0	-	42,0	28,0	22,0	6,00	0,30
	33G026020P	PL 26 8M 20 - 5F	1108	28	66,21	64,84	71,0	-	46,0	28,0	22,0	6,00	0,36
	33G028020P	PL 28 8M 20 - 5F	1108	28	71,30	70,08	75,0	-	49,0	28,0	22,0	6,00	0,44
	33G030020P	PL 30 8M 20 - 5F	1108	28	76,39	75,13	83,0	-	58,0	28,0	22,0	6,00	0,53
	33G032020P	PL 32 8M 20 - 5F	1610	42	81,49	80,16	87,0	-	63,0	28,0	25,0	3,00	0,42
	33G034020P	PL 34 8M 20 - 5F	1610	42	86,58	85,22	91,0	-	65,0	28,0	25,0	3,00	0,55
	33G036020P	PL 36 8M 20 - 5F	1610	42	91,67	90,30	98,5	-	68,0	28,0	25,0	3,00	0,68
Ghisa Cast iron Grauguß Fonte Fundición	33G038020P	PL 38 8M 20 - 5F	1610	42	96,77	95,39	103,0	-	72,0	28,0	25,0	3,00	0,80
	33G040020P	PL 40 8M 20 - 5F	1610	42	101,86	100,49	106,0	-	76,0	28,0	25,0	3,00	1,00
	33G044020P	PL 44 8M 20 - 8F	2012	50	112,05	110,67	119,0	93,0	-	28,0	32,0	4,00	1,18
	33G048020P	PL 48 8M 20 - 8F	2012	50	122,23	120,86	127,0	96,0	-	28,0	32,0	4,00	1,60
	33G056020P	PL 56 8M 20 - 8F	2012	50	142,60	141,23	148,0	110,0	-	28,0	32,0	4,00	2,40
	33G064020P	PL 64 8M 20 - 8WF	2012	50	162,97	161,60	168,0	110,0	137,0	28,0	32,0	4,00	2,70
	33G072020P	PL 72 8M 20 - 8WF	2012	50	183,35	181,97	192,0	110,0	158,0	28,0	32,0	4,00	3,30
	33G080020P	PL 80 8M 20 - 8W	2012	50	203,72	202,35	-	110,0	180,0	28,0	32,0	4,00	3,50
	33G090020P	PL 90 8M 20 - 8A	2012	50	229,18	227,81	-	110,0	204,0	28,0	32,0	4,00	3,65

HTD® 8M 30 Passo - Pitch - Teilung - Pas - Paso 8 mm

Materiale Material Werkstoff Matériel Material	Codice Item number Codierung Code Código	Descrizione Designation Bezeichnung Désignation Referencia	Bussola Bush Buchse Moyeu Casquillo	Foro	Dp	De	Df	Dm	Di	F	S	R	Peso Weight Gewicht Poids Peso
				Bore Bohrung Alésage Agujero									
				max mm	mm	mm	mm	mm	mm	mm	mm	mm	kg
Acciaio Steel Stahl Acier Acero	33G022030P	PL 22 8M 30 - 5F	1008	25	56,02	54,65	60,0	-	41,0	38,0	22,0	16,00	0,30
	33G024030P	PL 24 8M 30 - 5F	1108	28	61,12	59,75	66,0	-	42,0	38,0	22,0	16,00	0,38
	33G026030P	PL 26 8M 30 - 5F	1108	28	66,21	64,84	71,0	-	46,0	38,0	22,0	16,00	0,45
	33G028030P	PL 28 8M 30 - 5F	1210	32	71,30	70,08	75,0	-	49,0	38,0	25,0	13,00	0,55
	33G030030P	PL 30 8M 30 - 3F	1615	42	76,39	75,13	83,0	-	-	38,0	38,0	-	0,49
	33G032030P	PL 32 8M 30 - 3F	1615	42	81,49	80,16	87,0	-	-	38,0	38,0	-	0,59
	33G034030P	PL 34 8M 30 - 3F	1615	42	86,58	85,22	91,0	-	-	38,0	38,0	-	0,77
	33G036030P	PL 36 8M 30 - 3F	1615	42	91,67	90,30	98,5	-	-	38,0	38,0	-	0,96
Ghisa Cast iron Grauguß Fonte Fundición	33G038030P	PL 38 8M 30 - 3F	1615	42	96,77	95,39	103,0	-	-	38,0	38,0	-	1,15
	33G040030P	PL 40 8M 30 - 3F	1615	42	101,86	100,49	106,0	-	-	38,0	38,0	-	1,34
	33G044030P	PL 44 8M 30 - 4F	2012	50	112,05	110,67	119,0	-	91,0	38,0	32,0	3,00	1,33
	33G048030P	PL 48 8M 30 - 4F	2012	50	122,23	120,86	127,0	-	95,0	38,0	32,0	3,00	1,78
	33G056030P	PL 56 8M 30 - 4F	2012	50	142,60	141,23	148,0	-	117,0	38,0	32,0	3,00	2,75
	33G064030P	PL 64 8M 30 - 8F	2517	60	162,97	161,60	168,0	125,0	-	38,0	45,0	7,00	4,20
	33G072030P	PL 72 8M 30 - 8WF	2517	60	183,35	181,97	192,0	122,0	158,0	38,0	45,0	7,00	4,30
	33G080030P	PL 80 8M 30 - 8W	2517	60	203,72	202,35	-	125,0	180,0	38,0	45,0	7,00	4,60
	33G090030P	PL 90 8M 30 - 8A	2517	60	229,18	227,81	-	125,0	204,0	38,0	45,0	7,00	5,00
	33G112030P	PL 112 8M 30 - 8A	2517	60	285,21	283,83	-	125,0	260,0	38,0	45,0	7,00	6,20
	33G144030P	PL 144 8M 30 - 8A	2517	60	366,69	365,32	-	125,0	341,0	38,0	45,0	7,00	9,00



Pulegge dentate HTD® per bussola conica POGGILOCK®

HTD® timing belt pulleys for taper bush POGGILOCK®

HTD® Zahnriemenscheiben für Spannbuchse POGGILOCK®

Poulies dentées HTD® pour moyeu amovible POGGILOCK®

Poleas dentadas HTD® para casquillo cónico POGGILOCK®

HTD® 8M 50 Passo - Pitch - Teilung - Pas - Paso 8 mm

Materiale Material Werkstoff Matériel Material	Codice Item number Codierung Code Código	Descrizione Designation Bezeichnung Désignation Referencia	Bussola Bush Buchse Moyeu Casquillo	Foro	Dp	De	Df	Dm	Di	F	S	R	Peso Weight Gewicht Poids Peso
				Bore Bohrung Alésage Agujero									
				max mm	mm	mm	mm	mm	mm	mm	mm	mm	kg
Acciaio Steel Stahl Acier Acero	33G028050P	PL 28 8M 50 - 5F	1210	32	71,30	70,08	75,0	-	49,0	60,0	25,0	35,00	0,78
	33G030050P	PL 30 8M 50 - 5F	1615	42	76,39	75,13	83,0	-	58,0	60,0	38,0	22,00	0,70
	33G032050P	PL 32 8M 50 - 5F	1615	42	81,49	80,16	87,0	-	62,0	60,0	38,0	22,00	0,82
	33G034050P	PL 34 8M 50 - 5F	1615	42	86,58	85,22	91,0	-	65,0	60,0	38,0	22,00	1,06
	33G036050P	PL 36 8M 50 - 5F	1615	42	91,67	90,30	98,5	-	68,0	60,0	38,0	22,00	1,30
Ghisa Cast iron Grauguß Fonte Fundición	33G038050P	PL 38 8M 50 - 5F	1615	42	96,77	95,39	103,0	-	72,0	60,0	38,0	22,00	1,60
	33G040050P	PL 40 8M 50 - 4F	2012	50	101,86	100,49	106,0	-	82,0	60,0	32,0	14,00	1,24
	33G044050P	PL 44 8M 50 - 4F	2012	50	112,05	110,67	119,0	-	91,0	60,0	32,0	14,00	1,78
	33G048050P	PL 48 8M 50 - 4F	2012	50	122,23	120,86	127,0	-	95,0	60,0	32,0	14,00	2,30
	33G056050P	PL 56 8M 50 - 4F	2517	60	142,60	141,23	148,0	-	116,0	60,0	45,0	7,50	3,40
	33G064050P	PL 64 8M 50 - 4F	2517	60	162,97	161,60	168,0	-	137,0	60,0	45,0	7,50	5,00
	33G072050P	PL 72 8M 50 - 4F	2517	60	183,35	181,97	192,0	-	158,0	60,0	45,0	7,50	6,70
	33G080050P	PL 80 8M 50 - 4	3020	75	203,72	202,35	-	-	180,0	60,0	51,0	4,50	8,80
	33G090050P	PL 90 8M 50 - 9W	3020	75	229,18	227,81	-	170,0	204,0	60,0	51,0	4,50	8,80
	33G112050P	PL 112 8M 50 - 9W	3020	75	285,21	283,83	-	170,0	260,0	60,0	51,0	4,50	12,00
	33G144050P	PL 144 8M 50 - 9A	3020	75	366,69	365,32	-	170,0	341,0	60,0	51,0	4,50	15,20
	33G168050P	PL 168 8M 50 - 7A	3525	90	427,81	426,44	-	190,0	402,0	60,0	65,0	2,50	16,40
	33G192050P	PL 192 8M 50 - 7A	3525	90	488,92	487,55	-	190,0	460,0	60,0	65,0	2,50	21,80

HTD® 8M 85 Passo - Pitch - Teilung - Pas - Paso 8 mm

Materiale Material Werkstoff Matériel Material	Codice Item number Codierung Code Código	Descrizione Designation Bezeichnung Désignation Referencia	Bussola Bush Buchse Moyeu Casquillo	Foro	Dp	De	Df	Dm	Di	F	S	R	Peso Weight Gewicht Poids Peso
				Bore Bohrung Alésage Agujero									
				max mm	mm	mm	mm	mm	mm	mm	mm	mm	kg
Acciaio Steel Stahl Acier Acero	33G034085P	PL 34 8M 85 - 4F	1615	42	86,58	85,22	91,0	-	68,0	95,0	38,0	28,50	1,43
Ghisa Cast iron Grauguß Fonte Fundición	33G036085P	PL 36 8M 85 - 4F	1615	42	91,67	90,30	98,5	-	68,0	95,0	38,0	28,50	1,87
	33G038085P	PL 38 8M 85 - 4F	1615	42	96,77	95,39	103,0	-	72,0	95,0	38,0	28,50	2,20
	33G040085P	PL 40 8M 85 - 4F	2012	50	101,86	100,49	106,0	-	82,0	95,0	32,0	31,50	1,80
	33G044085P	PL 44 8M 85 - 4F	2012	50	112,05	110,67	119,0	-	91,0	95,0	32,0	31,50	2,30
	33G048085P	PL 48 8M 85 - 4F	2517	60	122,23	120,86	127,0	-	100,0	95,0	45,0	25,00	2,66
	33G056085P	PL 56 8M 85 - 4F	2517	60	142,60	141,23	148,0	-	117,0	95,0	45,0	25,00	4,45
	33G064085P	PL 64 8M 85 - 4F	2517	60	162,97	161,60	168,0	-	137,0	95,0	45,0	25,00	6,20
	33G072085P	PL 72 8M 85 - 4F	3020	75	183,35	181,97	192,0	-	158,0	95,0	51,0	22,00	8,00
	33G080085P	PL 80 8M 85 - 4	3020	75	203,72	202,35	-	-	180,0	95,0	51,0	22,00	10,00
	33G090085P	PL 90 8M 85 - 9W	3020	75	229,18	227,81	-	170,0	204,0	95,0	51,0	22,00	10,80
	33G112085P	PL 112 8M 85 - 9W	3020	75	285,21	283,83	-	170,0	260,0	95,0	51,0	22,00	15,00
	33G144085P	PL 144 8M 85 - 9A	3525	90	366,69	365,32	-	190,0	341,0	95,0	65,0	15,00	22,00
	33G168085P	PL 168 8M 85 - 9A	3525	90	427,81	426,44	-	190,0	402,0	95,0	65,0	15,00	23,00
	33G192085P	PL 192 8M 85 - 9A	3525	90	488,92	487,55	-	190,0	460,0	95,0	65,0	15,00	28,50



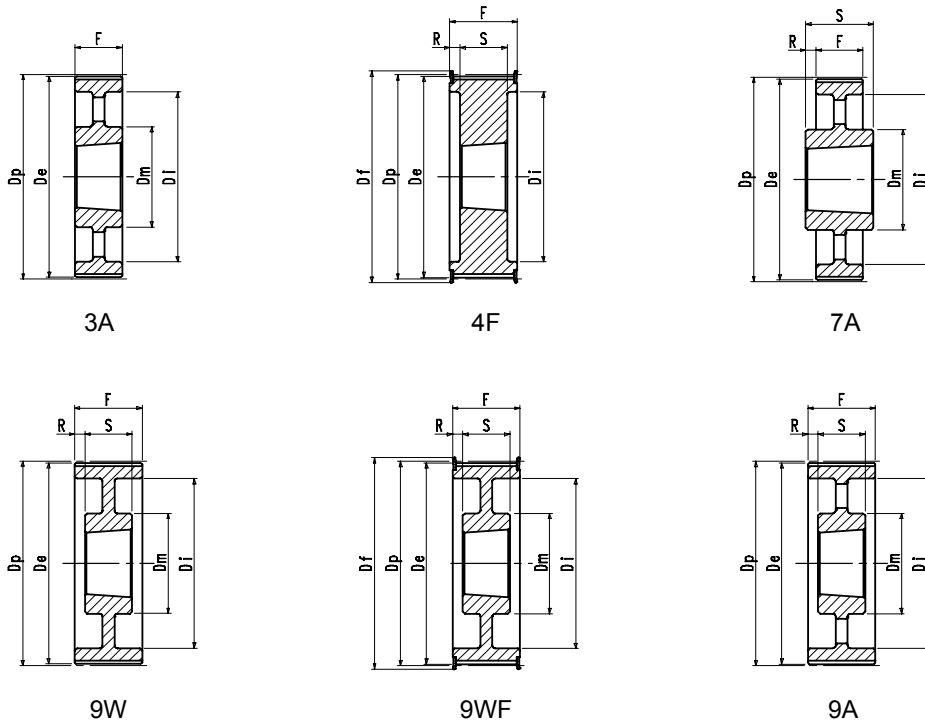
Pulegge dentate HTD® per bussola conica POGGILOCK®

HTD® timing belt pulleys for taper bush POGGILOCK®

HTD® Zahnriemenscheiben für Spannbuchse POGGILOCK®

Poulies dentées HTD® pour moyeu amovible POGGILOCK®

Poleas dentadas HTD® para casquillo cónico POGGILOCK®



HTD® 14M 40 Passo - Pitch - Teilung - Pas - Paso 14 mm

Materiale Material Werkstoff Matériel Material	Codice Item number Codierung Code Código	Descrizione Designation Bezeichnung Désignation Referencia	Bussola Bush Buchse Moyeu Casquillo	Foro	Dp	De	Df	Dm	Di	F	S	R	Peso
				Bore Bohrung Alésage Agujero									max mm
Ghisa Cast iron Grauguß Fonte Fundición	33I028040P	PL 28 14M 40 - 4F	2012	50	124,78	122,12	127,0	-	90,0	54,0	32,0	11,00	2,07
	33I029040P	PL 29 14M 40 - 4F	2012	50	129,23	126,57	138,0	-	100,0	54,0	32,0	11,00	2,38
	33I030040P	PL 30 14M 40 - 4F	2012	50	133,69	130,99	138,0	-	100,0	54,0	32,0	11,00	2,65
	33I032040P	PL 32 14M 40 - 4F	2012	50	142,60	139,88	154,0	-	104,0	54,0	32,0	11,00	3,40
	33I034040P	PL 34 14M 40 - 4F	2517	60	151,52	148,79	160,0	-	110,0	54,0	45,0	4,50	3,87
	33I036040P	PL 36 14M 40 - 4F	2517	60	160,43	157,68	168,0	-	120,0	54,0	45,0	4,50	4,80
	33I038040P	PL 38 14M 40 - 4F	2517	60	169,34	166,60	183,0	-	130,0	54,0	45,0	4,50	5,40
	33I040040P	PL 40 14M 40 - 4F	2517	60	178,25	175,49	188,0	-	138,0	54,0	45,0	4,50	6,00
	33I044040P	PL 44 14M 40 - 4F	3020	75	196,08	193,28	211,0	-	155,0	54,0	51,0	1,50	7,80
	33I048040P	PL 48 14M 40 - 4F	3020	75	213,90	211,11	226,0	-	170,0	54,0	51,0	1,50	9,40
	33I056040P	PL 56 14M 40 - 9WF	3020	75	249,55	246,76	256,0	170,0	208,0	54,0	51,0	1,50	10,80
	33I064040P	PL 64 14M 40 - 9WF	3020	75	285,21	282,41	296,0	170,0	239,0	54,0	51,0	1,50	13,40
	33I072040P	PL 72 14M 40 - 9W	3020	75	320,86	318,06	-	170,0	280,0	54,0	51,0	1,50	15,20
	33I080040P	PL 80 14M 40 - 9A	3020	75	356,51	353,71	-	170,0	315,0	54,0	51,0	1,50	16,00
	33I090040P	PL 90 14M 40 - 9A	3020	75	401,07	398,28	-	170,0	358,0	54,0	51,0	1,50	17,80
	33I112040P	PL 112 14M 40 - 9A	3020	75	499,11	496,32	-	170,0	457,0	54,0	51,0	1,50	25,60
	33I144040P	PL 144 14M 40 - 9A	3020	75	641,71	638,92	-	170,0	600,0	54,0	51,0	1,50	32,00
	33I168040P	PL 168 14M 40 - 9A	3020	75	748,66	745,87	-	170,0	706,0	54,0	51,0	1,50	44,00
	33I192040P	PL 192 14M 40 - 9A	3020	75	855,62	852,82	-	170,0	813,0	54,0	51,0	1,50	49,00
	33I216040P	PL 216 14M 40 - 9A *	3020	75	962,57	959,76	-	170,0	920,0	54,0	51,0	1,50	55,00
33I264040P	PL 264 14M 40 - 7A *	3535	90	1176,47	1173,68	-	190,0	1120,0	54,0	89,0	17,50	121,00	

* A richiesta - On request - Auf Anfrage - Sur demande - Bajo consulta.



Pulegge dentate HTD® per bussola conica POGGILOCK®

HTD® timing belt pulleys for taper bush POGGILOCK®

HTD® Zahnriemenscheiben für Spannbuchse POGGILOCK®

Poulies dentées HTD® pour moyeu amovible POGGILOCK®

Poleas dentadas HTD® para casquillo cónico POGGILOCK®

HTD® 14M 55 Passo - Pitch - Teilung - Pas - Paso 14 mm

Materiale Material Werkstoff Matériel Material	Codice Item number Codierung Code Código	Descrizione Designation Bezeichnung Désignation Referencia	Bussola Bush Buchse Moyeu Casquillo	Foro	Dp	De	Df	Dm	Di	F	S	R	Peso
				Bore Bohrung Alésage Agujero									max mm
				mm	mm	mm	mm	mm	mm	mm	mm	mm	kg
Ghisa Cast Iron Grauguß Fonte Fundición	33I028055P	PL 28 14M 55 - 4F	2012	50	124,78	122,12	127,0	-	90,0	70,0	32,0	19,00	2,20
	33I029055P	PL 29 14M 55 - 4F	2012	50	129,23	126,57	138,0	-	100,0	70,0	32,0	19,00	2,74
	33I030055P	PL 30 14M 55 - 4F	2517	60	133,69	130,99	138,0	-	100,0	70,0	45,0	12,50	2,70
	33I032055P	PL 32 14M 55 - 4F	2517	60	142,60	139,88	154,0	-	108,0	70,0	45,0	12,50	3,66
	33I034055P	PL 34 14M 55 - 4F	2517	60	151,52	148,79	160,0	-	110,0	70,0	45,0	12,50	4,55
	33I036055P	PL 36 14M 55 - 4F	2517	60	160,43	157,68	168,0	-	120,0	70,0	45,0	12,50	5,20
	33I038055P	PL 38 14M 55 - 4F	2517	60	169,34	166,60	183,0	-	130,0	70,0	45,0	12,50	6,20
	33I040055P	PL 40 14M 55 - 4F	2517	60	178,25	175,49	188,0	-	138,0	70,0	45,0	12,50	7,00
	33I044055P	PL 44 14M 55 - 4F	3020	75	196,08	193,28	211,0	-	155,0	70,0	51,0	9,50	8,60
	33I048055P	PL 48 14M 55 - 4F	3020	75	213,90	211,11	226,0	-	170,0	70,0	51,0	9,50	10,40
	33I056055P	PL 56 14M 55 - 9WF	3020	75	249,55	246,76	256,0	170,0	208,0	70,0	51,0	9,50	12,40
	33I064055P	PL 64 14M 55 - 9WF	3020	75	285,21	282,41	296,0	170,0	239,0	70,0	51,0	9,50	14,50
	33I072055P	PL 72 14M 55 - 9W	3020	75	320,86	318,06	-	170,0	280,0	70,0	51,0	9,50	16,20
	33I080055P	PL 80 14M 55 - 9A	3020	75	356,51	353,71	-	170,0	315,0	70,0	51,0	9,50	17,50
	33I090055P	PL 90 14M 55 - 9A	3020	75	401,07	398,28	-	170,0	358,0	70,0	51,0	9,50	20,10
	33I112055P	PL 112 14M 55 - 9A	3020	75	499,11	496,32	-	170,0	457,0	70,0	51,0	9,50	28,40
	33I144055P	PL 144 14M 55 - 9A	3020	75	641,71	638,92	-	170,0	600,0	70,0	51,0	9,50	36,20
	33I168055P	PL 168 14M 55 - 9A	3020	75	748,66	745,87	-	170,0	706,0	70,0	51,0	9,50	49,00
	33I192055P	PL 192 14M 55 - 9A	3020	75	855,62	852,82	-	170,0	813,0	70,0	51,0	9,50	53,00
	33I216055P	PL 216 14M 55 - 7A *	3535	90	962,57	959,76	-	190,0	920,0	70,0	89,0	9,50	65,80
	33I264055P	PL 264 14M 55 - 7A *	3535	90	1176,47	1173,68	-	190,0	1120,0	70,0	89,0	9,50	141,88

HTD® 14M 85 Passo - Pitch - Teilung - Pas - Paso 14 mm

Materiale Material Werkstoff Matériel Material	Codice Item number Codierung Code Código	Descrizione Designation Bezeichnung Désignation Referencia	Bussola Bush Buchse Moyeu Casquillo	Foro	Dp	De	Df	Dm	Di	F	S	R	Peso
				Bore Bohrung Alésage Agujero									max mm
				mm	mm	mm	mm	mm	mm	mm	mm	mm	kg
Ghisa Cast Iron Grauguß Fonte Fundición	33I028085P	PL 28 14M 85 - 4F	2517	60	124,78	122,12	127,0	-	99,0	102,0	45,0	28,50	2,70
	33I029085P	PL 29 14M 85 - 4F	2517	60	129,23	126,57	138,0	-	100,0	102,0	45,0	28,50	3,40
	33I030085P	PL 30 14M 85 - 4F	2517	60	133,69	130,99	138,0	-	100,0	102,0	45,0	28,50	3,75
	33I032085P	PL 32 14M 85 - 4F	2517	60	142,60	139,88	154,0	-	108,0	102,0	45,0	28,50	4,80
	33I034085P	PL 34 14M 85 - 4F	2517	60	151,52	148,79	160,0	-	110,0	102,0	45,0	28,50	6,00
	33I036085P	PL 36 14M 85 - 4F	3020	75	160,43	157,68	168,0	-	125,0	102,0	51,0	25,50	5,80
	33I038085P	PL 38 14M 85 - 4F	3020	75	169,34	166,60	183,0	-	130,0	102,0	51,0	25,50	6,80
	33I040085P	PL 40 14M 85 - 4F	3020	75	178,25	175,49	188,0	-	138,0	102,0	51,0	25,50	8,00
	33I044085P	PL 44 14M 85 - 4F	3030	75	196,08	193,28	211,0	-	155,0	102,0	76,0	13,00	11,80
	33I048085P	PL 48 14M 85 - 4F	3030	75	213,90	211,11	226,0	-	170,0	102,0	76,0	13,00	15,10
	33I056085P	PL 56 14M 85 - 4F	3525	90	249,55	246,76	256,0	-	210,0	102,0	65,0	18,50	22,50
	33I064085P	PL 64 14M 85 - 9WF	3525	90	285,21	282,41	296,0	190,0	239,0	102,0	65,0	18,50	26,00
	33I072085P	PL 72 14M 85 - 9W	3525	90	320,86	318,06	-	190,0	280,0	102,0	65,0	18,50	25,50
	33I080085P	PL 80 14M 85 - 9A	3525	90	356,51	353,71	-	190,0	315,0	102,0	65,0	18,50	29,20
	33I090085P	PL 90 14M 85 - 9A	3525	90	401,07	398,28	-	190,0	358,0	102,0	65,0	18,50	30,80
	33I112085P	PL 112 14M 85 - 9A	3525	90	499,11	496,32	-	190,0	457,0	102,0	65,0	18,50	39,50
	33I144085P	PL 144 14M 85 - 9A	3525	90	641,71	638,92	-	190,0	600,0	102,0	65,0	18,50	51,00
	33I168085P	PL 168 14M 85 - 9A	3525	90	748,66	745,87	-	190,0	706,0	102,0	65,0	18,50	61,00
	33I192085P	PL 192 14M 85 - 3A	4040	100	855,62	852,82	-	230,0	813,0	102,0	102,0	-	86,00
	33I216085P	PL 216 14M 85 - 3A *	4040	100	962,57	959,76	-	230,0	920,0	102,0	102,0	-	91,50
	33I264085P	PL 264 14M 85 - 3A *	4040	100	1176,47	1173,68	-	230,0	1120,0	102,0	102,0	-	166,00

* A richiesta - On request - Auf Anfrage - Sur demande - Bajo consulta.



Pulegge dentate HTD® per bussola conica POGGILOCK®

HTD® timing belt pulleys for taper bush POGGILOCK®

HTD® Zahnriemenscheiben für Spannbuchse POGGILOCK®

Poulies dentées HTD® pour moyeu amovible POGGILOCK®

Poleas dentadas HTD® para casquillo cónico POGGILOCK®

HTD® 14M 115 Passo - Pitch - Teilung - Pas - Paso 14 mm

Materiale Material Werkstoff Matériel Material	Codice Item number Codierung Code Código	Descrizione Designation Bezeichnung Désignation Referencia	Bussola Bush Buchse Moyeu Casquillo	Foro	Dp	De	Df	Dm	Di	F	S	R	Peso
				Bore Bohrung Alésage Agujero									max mm
				mm	mm	mm	mm	mm	mm	mm	mm	mm	kg
Ghisa Cast iron Grauguß Fonte Fundición	33I028115P	PL 28 14M 115 - 4F	2517	60	124,78	122,12	127,0	-	99,0	133,0	45,0	44,00	3,77
	33I029115P	PL 29 14M 115 - 4F	2517	60	129,23	126,57	138,0	-	100,0	133,0	45,0	44,00	4,00
	33I030115P	PL 30 14M 115 - 4F	2517	60	133,69	130,99	138,0	-	100,0	133,0	45,0	44,00	5,00
	33I032115P	PL 32 14M 115 - 4F	2517	60	142,60	139,88	154,0	-	108,0	133,0	45,0	44,00	6,80
	33I034115P	PL 34 14M 115 - 4F	2517	60	151,52	148,79	160,0	-	115,0	133,0	45,0	44,00	6,80
	33I036115P	PL 36 14M 115 - 4F	3020	75	160,43	157,68	168,0	-	125,0	133,0	51,0	41,00	7,00
	33I038115P	PL 38 14M 115 - 4F	3020	75	169,34	166,60	183,0	-	130,0	133,0	51,0	41,00	8,40
	33I040115P	PL 40 14M 115 - 4F	3020	75	178,25	175,49	188,0	-	140,0	133,0	51,0	41,00	9,20
	33I044115P	PL 44 14M 115 - 4F	3030	75	196,08	193,28	211,0	-	155,0	133,0	76,0	28,50	14,00
	33I048115P	PL 48 14M 115 - 4F	3030	75	213,90	211,11	226,0	-	170,0	133,0	76,0	28,50	17,10
	33I056115P	PL 56 14M 115 - 4F	3535	90	249,55	246,76	256,0	-	210,0	133,0	89,0	22,00	24,80
	33I064115P	PL 64 14M 115 - 9WF	3535	90	285,21	282,41	296,0	190,0	239,0	133,0	89,0	22,00	28,20
	33I072115P	PL 72 14M 115 - 9W	3535	90	320,86	318,06	-	190,0	280,0	133,0	89,0	22,00	29,00
	33I080115P	PL 80 14M 115 - 9A	3535	90	356,51	353,71	-	190,0	315,0	133,0	89,0	22,00	32,00
	33I090115P	PL 90 14M 115 - 9A	3535	90	401,07	398,28	-	190,0	358,0	133,0	89,0	22,00	36,50
	33I112115P	PL 112 14M 115 - 9A	3535	90	499,11	496,32	-	190,0	456,0	133,0	89,0	22,00	46,00
	33I144115P	PL 144 14M 115 - 9A	4040	100	641,71	638,92	-	230,0	600,0	133,0	102,0	15,50	68,00
	33I168115P	PL 168 14M 115 - 9A	4040	100	748,66	745,87	-	230,0	706,0	133,0	102,0	15,50	82,60
	33I192115P	PL 192 14M 115 - 9A	4040	100	855,62	852,82	-	230,0	813,0	133,0	102,0	15,50	96,00
	33I216115P	PL 216 14M 115 - 9A *	4040	100	962,57	959,76	-	230,0	920,0	133,0	102,0	15,50	107,50
33I264115P	PL 264 14M 115 - 9A *	4040	100	1176,47	1173,68	-	230,0	1120,0	133,0	102,0	15,50	204,00	

HTD® 14M 170 Passo - Pitch - Teilung - Pas - Paso 14 mm

Materiale Material Werkstoff Matériel Material	Codice Item number Codierung Code Código	Descrizione Designation Bezeichnung Désignation Referencia	Bussola Bush Buchse Moyeu Casquillo	Foro	Dp	De	Df	Dm	Di	F	S	R	Peso
				Bore Bohrung Alésage Agujero									max mm
				mm	mm	mm	mm	mm	mm	mm	mm	mm	kg
Ghisa Cast iron Grauguß Fonte Fundición	33I038170P	PL 38 14M 170 - 4F	3030	75	169,34	166,60	183,0	-	130,0	187,0	76,0	55,50	11,70
	33I040170P	PL 40 14M 170 - 4F	3030	75	178,25	175,49	188,0	-	140,0	187,0	76,0	55,50	13,00
	33I044170P	PL 44 14M 170 - 4F	3535	90	196,08	193,28	211,0	-	161,0	187,0	89,0	49,00	15,00
	33I048170P	PL 48 14M 170 - 4F	3535	90	213,90	211,11	226,0	-	175,0	187,0	89,0	49,00	19,00
	33I056170P	PL 56 14M 170 - 4F	3535	90	249,55	246,76	256,0	-	210,0	187,0	89,0	49,00	28,50
	33I064170P	PL 64 14M 170 - 4F	4040	100	285,21	282,41	296,0	-	239,0	187,0	102,0	42,50	41,00
	33I072170P	PL 72 14M 170 - 9W	4040	100	320,86	318,06	-	230,0	280,0	187,0	102,0	42,50	46,90
	33I080170P	PL 80 14M 170 - 9W	4040	100	356,51	353,71	-	230,0	315,0	187,0	102,0	42,50	48,00
	33I090170P	PL 90 14M 170 - 9A	4040	100	401,07	398,28	-	230,0	358,0	187,0	102,0	42,50	52,50
	33I112170P	PL 112 14M 170 - 9A	5050	125	499,11	496,32	-	265,0	457,0	187,0	127,0	30,00	74,50
	33I144170P	PL 144 14M 170 - 9A	5050	125	641,71	638,92	-	265,0	600,0	187,0	127,0	30,00	91,00
	33I168170P	PL 168 14M 170 - 9A	5050	125	748,66	745,87	-	265,0	706,0	187,0	127,0	30,00	116,00
	33I192170P	PL 192 14M 170 - 9A	5050	125	855,62	852,82	-	265,0	813,0	187,0	127,0	30,00	134,00
	33I216170P	PL 216 14M 170 - 9A *	5050	125	962,57	959,76	-	265,0	920,0	187,0	127,0	30,00	146,50
	33I264170P	PL 264 14M 170 - 9A *	5050	125	1176,47	1173,68	-	265,0	1120,0	187,0	127,0	30,00	-

* A richiesta - On request - Auf Anfrage - Sur demande - Bajo consulta.